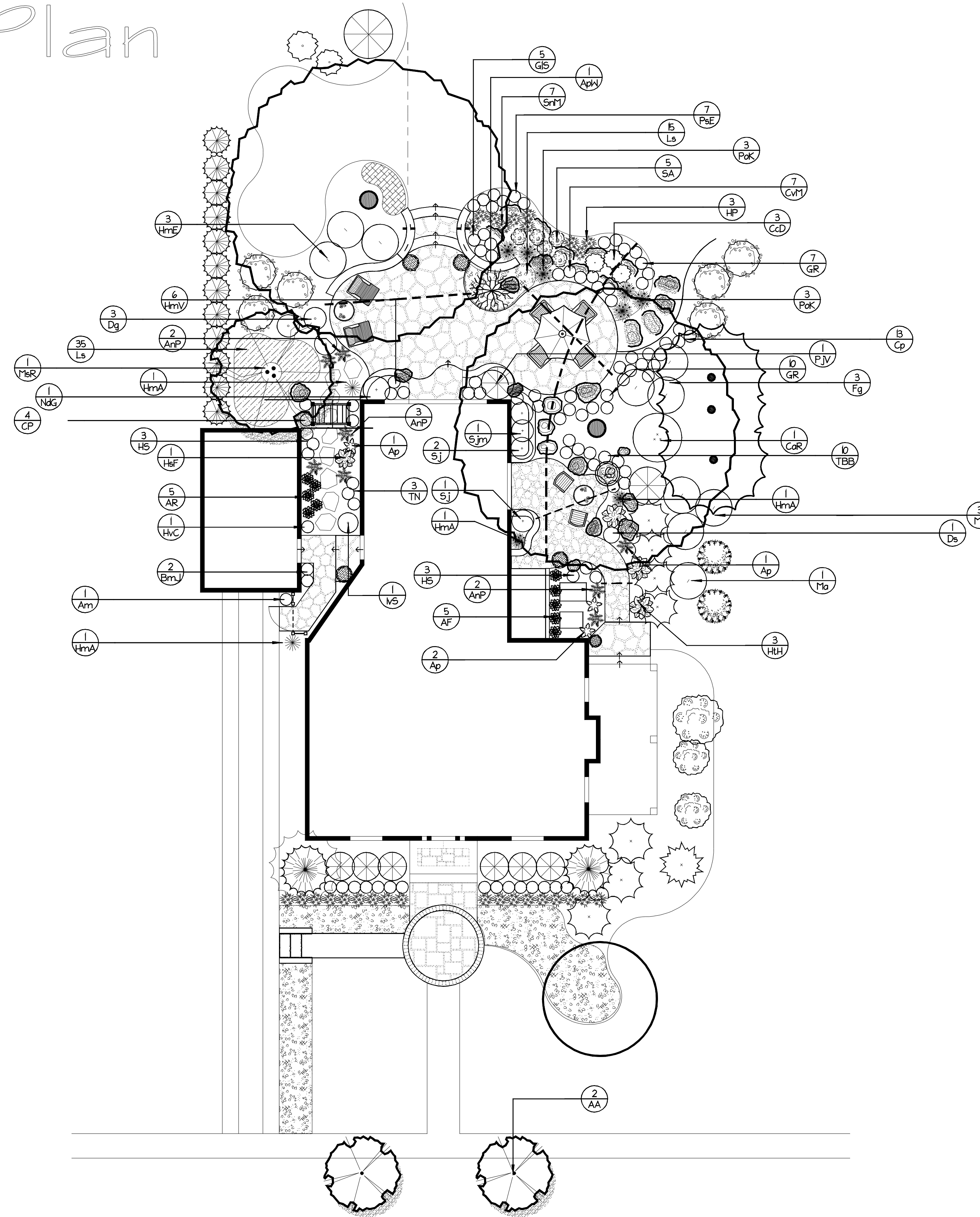


FREDERICK CITY RESIDENCE

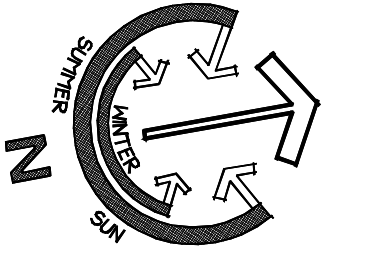
Landscape Plan

Key	Qty	Botanical Name	Common Name	Size/Condition
Trees				
ApN	1	Acer palmatum 'Waterfall'	WATERFALL JAPANESE MAPLE	30-36' spr.
AA	2	Amelanchier x grandiflora 'Autumn Brilliance'	AUTUMN BRILLIANCE (R) APPLE SERVICEBERRY	2-25'/B&B
MeR	1	Magnolia stellata 'Royal Star'	ROYAL STAR MAGNOLIA	6-7'
Shrubs				
CdD	3	Caryopteris x clandonensis 'Dark Knight'	DARK KNIGHT BLUEBEARD	n/a
CoR	1	Clethra alnifolia 'Ruby Spice'	RUBY SPICE SUMMER SWEET	3 gal.
Dg	3	Deutzia gracilis 'Nikko'	DWARF NIKKO DEUTZIA	3 Gal.
Fg	3	Fothergilla major 'Mount Airy'	MOUNT AIRY FOTHERGILLA	3 Gal.
HmE	3	Hydrangea macrophylla 'Endless Summer'	ENDLESS SUMMER EVERBLOOMING HYDRANGEA	n/a
Lvs	1	Tea virginica 'Sprich' Plant. Patent No. 10988	LITTLE HENRY(R) SWEETSPIRE	3 Gal.
Ma	4	Mahonia aquifolium	OREGON GRAPE HOLLY	n/a
NDG	1	Nandina domestica 'Gulf Stream'	GULF STREAM NANDINA	n/a
PJV	1	Pieris japonica 'Valley Rose'	VALLEY ROSE PERIS	18-24"
Sj	3	Skimmia japonica (Female)	JAPANESE SKIMMIA (FEMALE)	2 Gal.
Sjm	1	Skimmia japonica (Male)	JAPANESE SKIMMIA (MALE)	2 Gal.
Perennials and Annuals				
Ap	4	Adiantum pedatum	AMERICAN MADENHAIR FERN	1 Gal.
Am	1	Alchemilla mollis	LADY'S MANTLE	1 Gal.
AF	5	Astilbe x arendsii 'Fanal'	FANAL ASTILBE	1 Gal.
AR	5	Astilbe x arendsii 'Rheinland'	RHENLAND ASTILBE	1 Gal.
ArP	7	Athyrium riparium 'Pictum'	JAPANESE PAINTED FERN	1 Gal.
BmJ	2	Brunnera macrophylla 'Variegata'	VAREGATED SIBERIAN BUGLOSS	n/a
Cp	13	Ceratostigma plumbaginoides	DWARF PLUMBAGO	1 Qt.
CvM	7	Coreopsis verticillata 'Moonbeam'	MOONBEAM THREADLEAF COREOPSIS	1 Gal.
Ds	1	Dicentra spectabilis	COMMON BLEEDING HEART	1 Gal.
GIS	5	Gaura lindheimeri 'Siskiyou Pink'	SEKITOU PINK GAURA	1 Gal.
GR	17	Geranium x 'Rozanne'	ROZANNE CRANESBILL	1 Gal.
HP	3	Hemerocallis x 'Pardon Me'	PARDON ME MINATURE/DWARF DAYLILY	1 Gal.
HvC	1	Heuchera villosa 'Caramel'	YELLOW LEAVED HEUCHERA	n/a
H5	6	Heuchera x 'Silver Scrolls'	SILVER SCROLLS CORAL BELLS	n/a
HmV	6	Heuchera x 'Velvet Night'	VELVET NIGHT CORAL BELLS	n/a
HfF	1	Hosta sieboldiana 'Frances Williams'	FRANCES WILLIAMS PLANTAIN LILY	n/a
HLH	3	Hosta x tardiana 'Halcyon'	HALCYON PLANTAIN LILY	n/a
Ls	50	Liriope spicata	CREeping LILY TURF	1 Gal.
PaE	7	Phlox subulata 'Emerald Blue'	EMERALD BLUE CREEPING PHLOX	1 Gal.
SrM	7	Salvia nemerosa 'Maihacht'	MAY NIGHT SAGE	n/a
SA	5	Sedum x 'Autumn Joy'	AUTUMN JOY STONECROP	1 Gal.
TBB	10	Tiarella 'Black Snowflake'	FOAM FLOWER	1 Qt.
TN	3	Tiarella x 'Neon Lights'	NEON LIGHTS FOAM FLOWER	1 Gal.
Groundcover and Vines				
CP	4	Clematis x 'President'	PRESIDENT CLEMATIS	n/a
Ornamental Grasses				
HmA	4	Hakonechloa macro 'Aureola'	GOLDEN JAPANESE FOREST GRASS	n/a
PkK	6	Pennisetum orientale 'Karley Rose'	KARLEY ROSE FOUNTAIN GRASS	n/a



LIGHTING LEGEND:

- Accent Light (Fixture GR-22B, qty. 1)
- In-Ground Light (Fixture GM-5263, qty. 6)
- Step Light (Fixture SL-4243, qty. 2)
- Transformer (MT-600DT, qty. 1)



WAGESTER DESIGN GROUP
Landscape Architecture

No.	Date	Revision

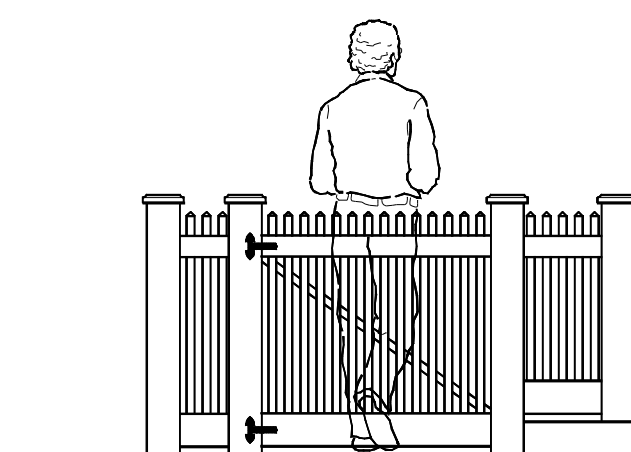
Client :
Frederick City Res.

Address :
Frederick, MD 21701

Scale : 1/8" = 1'-0"

Plan No :

Designer : KEW
Editor : KEW
Date : Jan. 2008



PICKET FENCE DETAIL
Scale: 3/8" = 1'-0"

